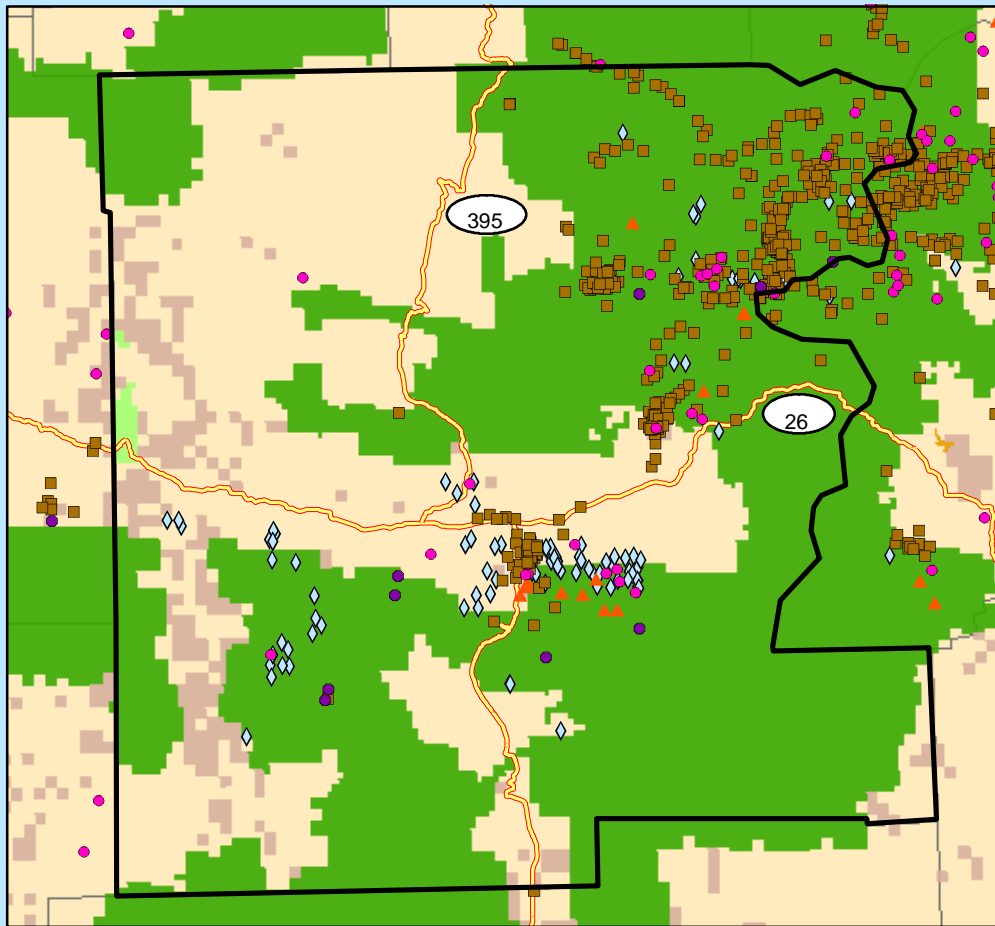


Abandoned Hardrock Mines and Waters Polluted by Metals

Grant County, OR

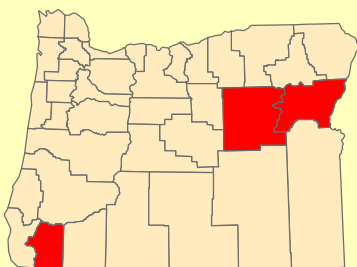


0 10 20 40 Miles

1:1,059,422



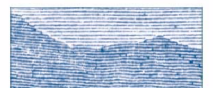
Counties with the Greatest Number of



Abandoned Hardrock Mines

Legend

- | | | |
|--|---|--|
| <ul style="list-style-type: none"> Cities Impaired Water Areas Impaired Water Segments | <p>Abandoned Hardrock Mines</p> <ul style="list-style-type: none"> All Others Chromium Copper Gold Mercury <p>Road Classification</p> <ul style="list-style-type: none"> Limited Access Highway Highway | <p>Federal Lands</p> <ul style="list-style-type: none"> Bureau of Indian Affairs Bureau of Land Management Bureau of Reclamation Department of Defense Forest Service Fish and Wildlife Service National Park Service Other Agencies (NASA, DOE, DOT...) Counties |
|--|---|--|



MINERAL
POLICY
CENTER

A Project of the
Mineral Policy Center
Map by Ali Steimke
May 2002