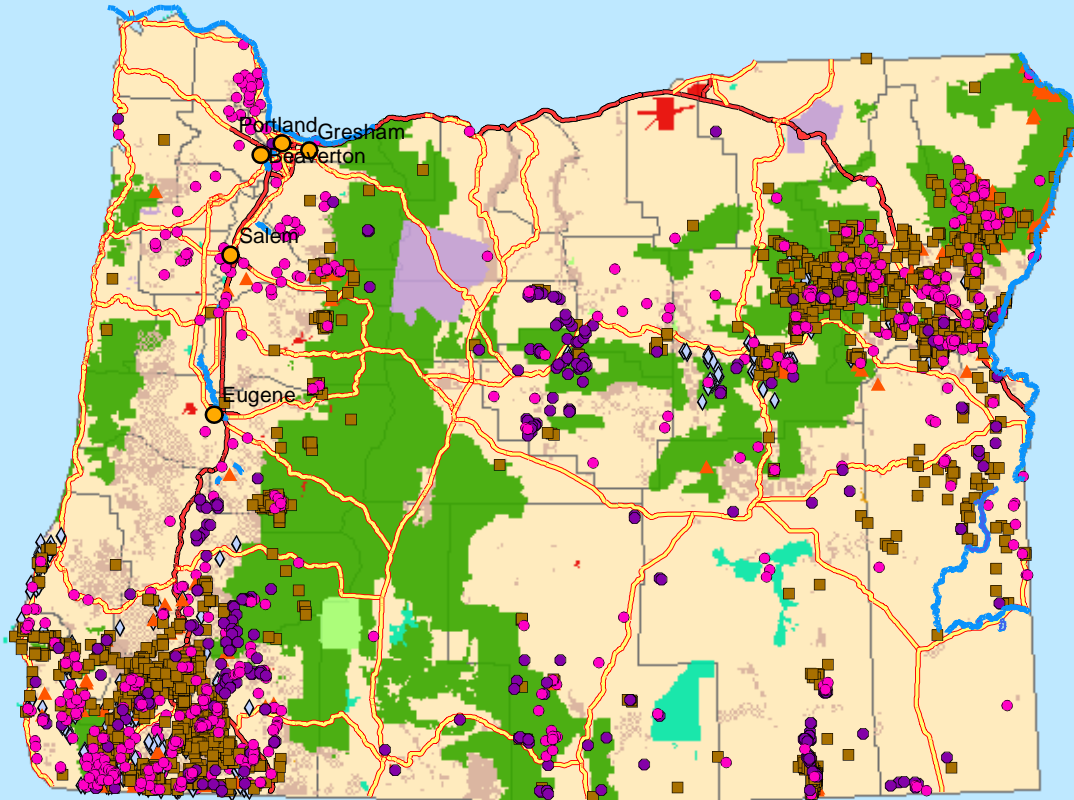


Abandoned Hardrock Mines and Waters Polluted by Metals

OREGON



0 65 130 260 Miles

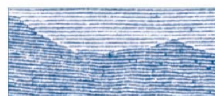
1:4,560,846



Legend

- | | |
|---|--|
| <ul style="list-style-type: none"> Cities Impaired Water Areas Impaired Water Segments | <p>Federal Lands</p> <ul style="list-style-type: none"> Bureau of Indian Affairs Bureau of Land Management Bureau of Reclamation Department of Defense Forest Service Fish and Wildlife Service National Park Service Other Agencies (NASA, DOE, DOT...) Counties |
| <p>Abandoned Hardrock Mines</p> <ul style="list-style-type: none"> All Others Chromium Copper Gold Mercury | <p>Road Classification</p> <ul style="list-style-type: none"> Limited Access Highway Highway |

Impaired Water Segments and Impaired Water Areas data obtained from U.S. EPA Office of Water. Abandoned Hardrock Mines data obtained from U.S. Geological Survey's MASMILS database 2002 beta copy. All other layers obtained from ESRI.



**MINERAL
POLICY
CENTER**

A Project of the
Mineral Policy Center
Map by Ali Steimke
May 2002