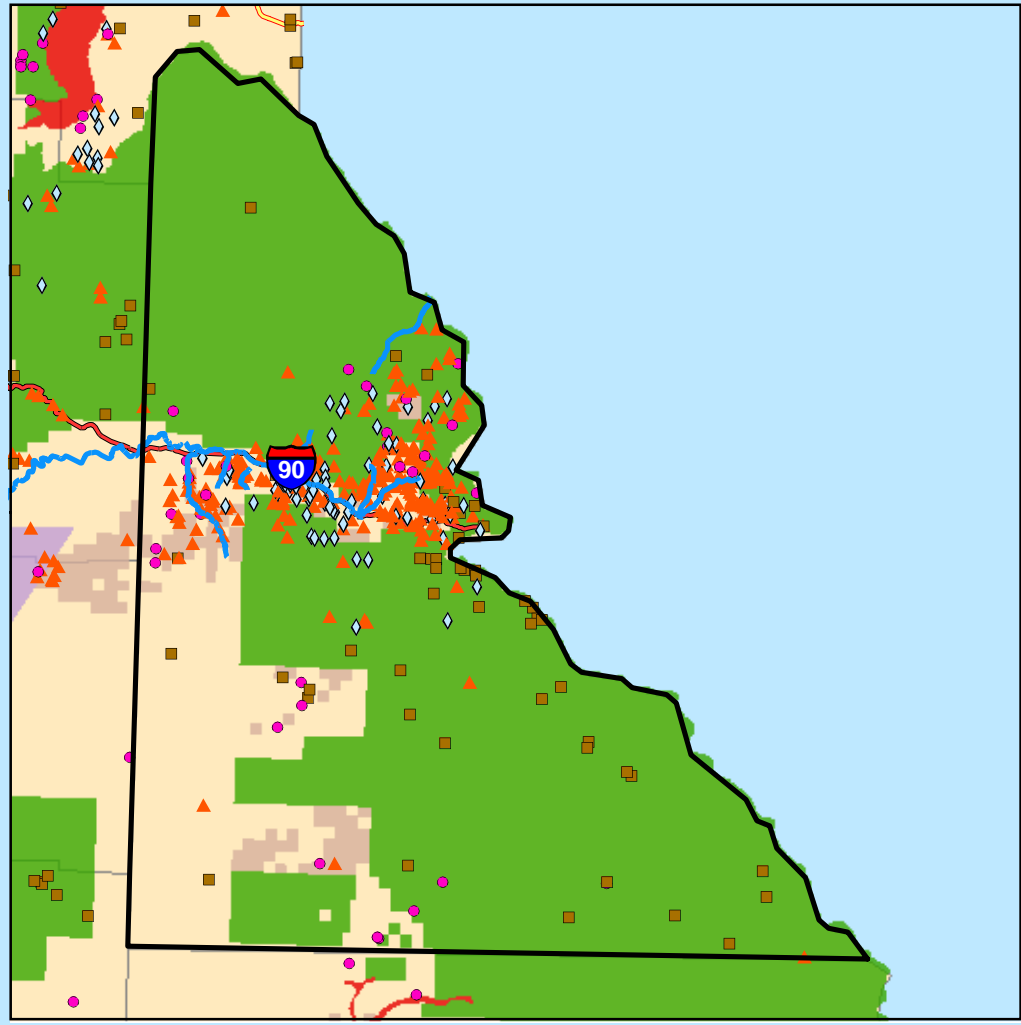
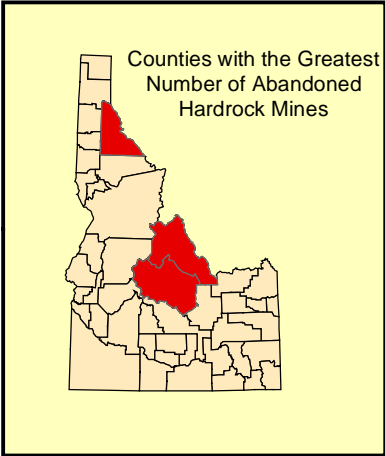


# Abandoned Hardrock Mines and Waters Polluted by Metals

## Shoshone County, ID

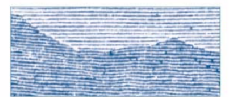


0 12.5 25 50 Miles  
1:1,057,101



**Legend**

● Cities	<b>Federal Lands</b>
■ Impaired Water Areas	■ Bureau of Indian Affairs
— Impaired Water Segments	■ Bureau of Land Management
<b>Abandoned Hardrock Mines</b>	■ Bureau of Reclamation
● All Others	■ Department of Defense
■ Copper	■ Forest Service
▲ Lead	■ Fish and Wildlife Service
◇ Silver	■ National Park Service
<b>Road Classification</b>	■ Other Agencies (NASA, DOE, DOT...)
— Limited Access Highway	■ Counties
— Highway	



**MINERAL  
POLICY  
CENTER**

A Project of the  
Mineral Policy Center  
Map by Ali Steimke  
May 2002