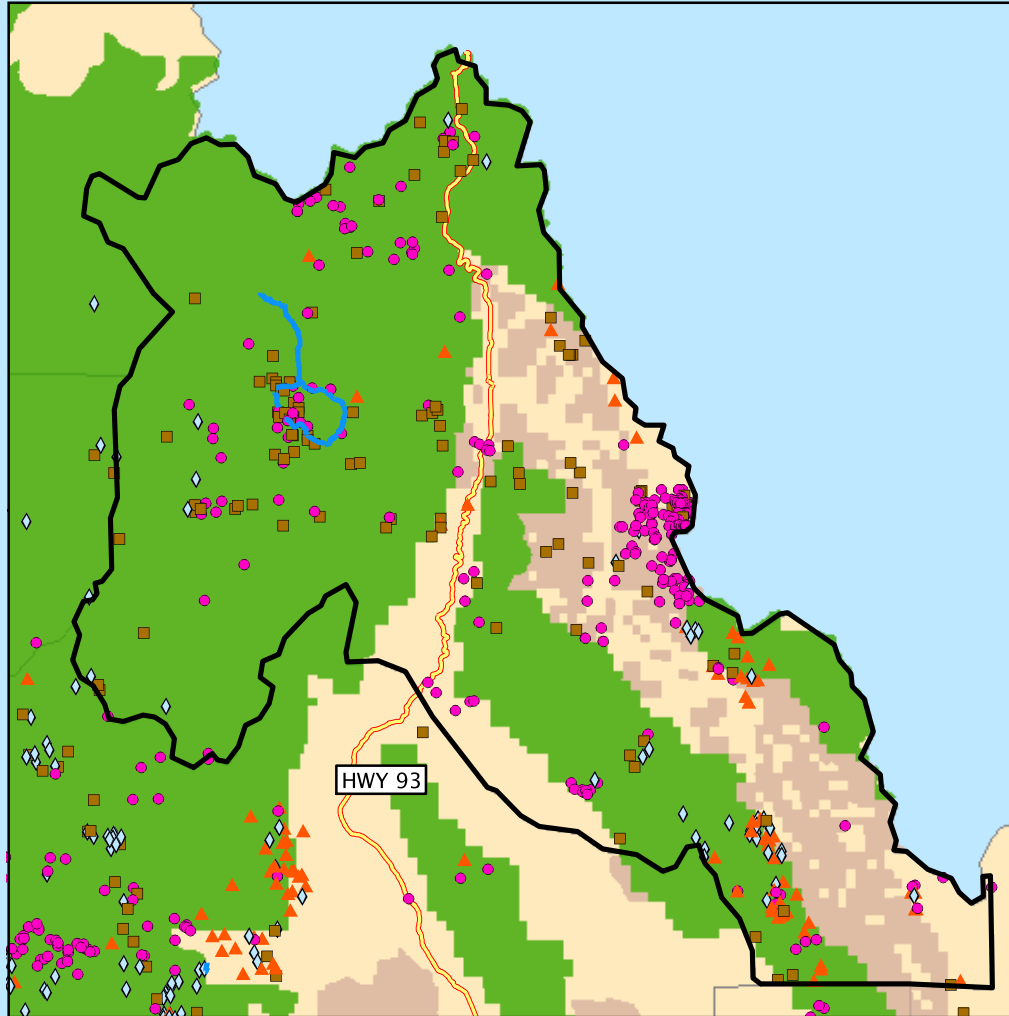


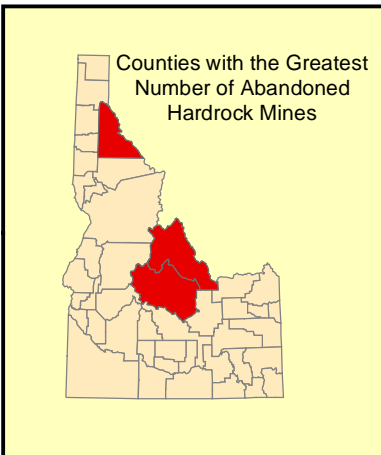
Abandoned Hardrock Mines and Waters Polluted by Metals

Lemhi County, ID



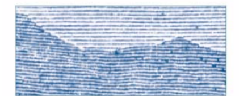
0 15 30 60 Miles

1:1,314,980



Legend

Impaired Water Areas	Federal Lands
Impaired Water Segments	Bureau of Indian Affairs
Abandoned Hardrock Mines	Bureau of Land Management
All Others	Bureau of Reclamation
Copper	Department of Defense
Lead	Forest Service
Silver	Fish and Wildlife Service
Major Roads	National Park Service
Limited Access Highway	Other Agencies (NASA, DOE, DOT...)
Highway	Counties
	Cities



MINERAL
POLICY
CENTER

A Project of the
Mineral Policy Center
Map by Ali Steimke
May 2002