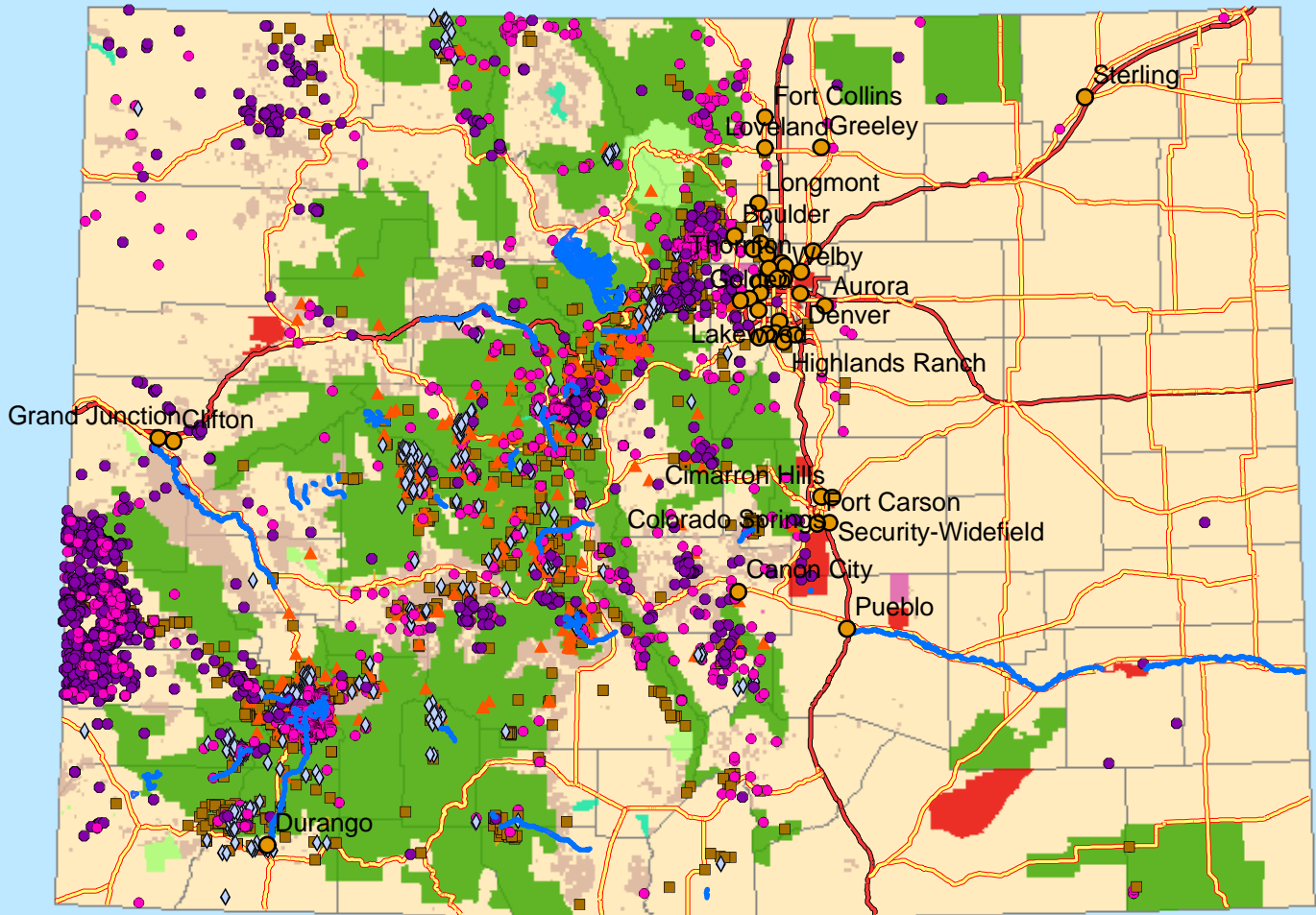


Abandoned Hardrock Mines and Waters Polluted by Metals

COLORADO



0 50 100 200 Miles

1:3,591,351



Legend

- | | |
|--|--|
| <ul style="list-style-type: none"> Cities Impaired Water Areas Impaired Water Segments Abandoned Hardrock Mines All Others Gold Lead Silver Uranium Major Roads Limited Access Highway Highway | <ul style="list-style-type: none"> Federal Lands Bureau of Indian Affairs Bureau of Land Management Bureau of Reclamation Department of Defense Forest Service Fish and Wildlife Service National Park Service Other Agencies (NASA, DOE, DOT...) Counties |
|--|--|

Impaired Water Segments and Impaired Water Areas data obtained from U.S. EPA Office of Water. Abandoned Hardrock Mines data obtained from U.S. Geological Survey's MASMILS database 2002 beta copy. All other layers obtained from ESRI. Note that segments of the Gunnison and the Arkansas are polluted by metals from natural causes or by manufacturing site.



A Project of the
Mineral Policy Center
Map by Ali Steimke
May 2002